

Soaring Higher

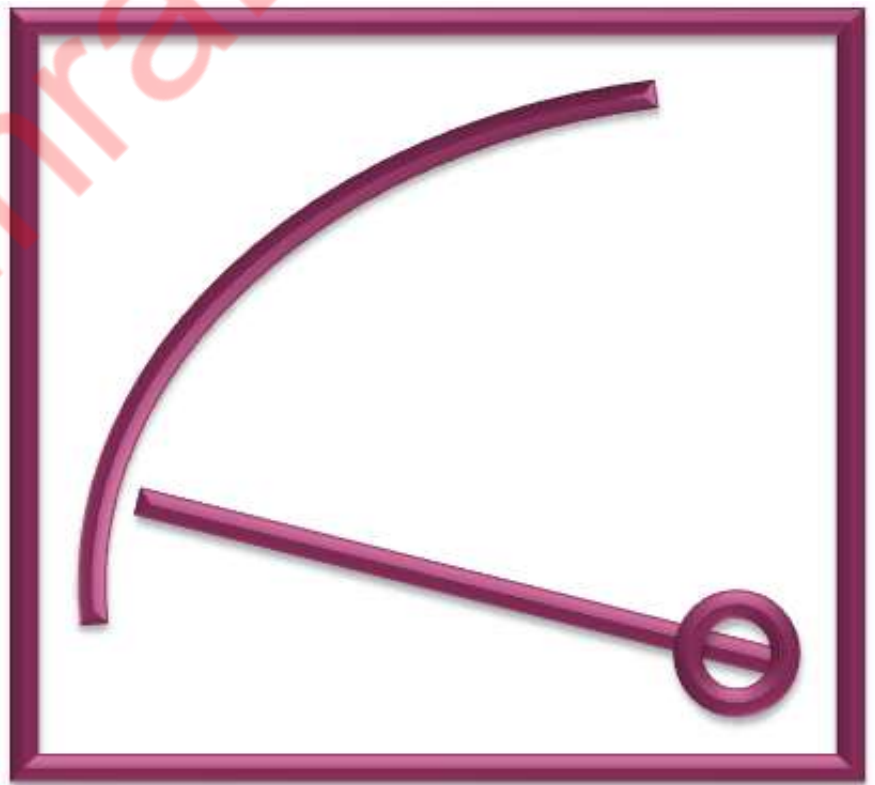
Analog Expertise



Rishabh Instruments Limited
Pricelist January 2023

Index

Analog Expertise	Page No.
Analog Panel Meters	01
CAM Switches	06
Current Transformers	11
DC Shunts	28
Terms and conditions	29



Analog Panel Meters



90° Scale

Group	Type	Description	48x48	72x72	96x96	144x144
			mm	mm	mm	mm
			LP (INR)			
Moving Iron AC Meters			EQ41	EQ71	EQ91	EQ11
EQ	Voltmeter	6, 10, 15, 25, 30, 40, 50, 75, 100, 110, 120, 125, 132.5, 133.33, 150, 250, 300V	555	510	590	855
		400, 500, 600, 750V	650	555	645	955
		Non Standard Voltmeter/Non Std PT Operated Voltmeter/Other than above ranges (upto 1000V)	755	650	745	1,105
	Milli -Ammeter	100, 150, 250, 400, 500, 600, 750mA	545	500	545	755
		1, 1.2, 1.25, 1.5, 2.5, 4, 5, 6, 10, 15, 20, 25, CT Operated 5A/1A Secondary	545	490	510	725
Ammeter	30, 40, 50, 60A	765	590	625	855	
	100A	-	590	625	855	
	Non Standard Ammeter/Other than above ranges (upto 100A)	820	745	775	1,085	
Moving Iron AC Meters with In-built Selector Switch			SS71	SS91		
SS	Voltmeter / Ammeter	Inbuilt selector switch type Ammeters & Voltmeters (EQ-SWT)	-	785	880	-
Moving Coil DC Meters			PQ41	PQ71	PQ91	PQ11
	Milli -Voltmeter	15**, 25**, 40**, 50 mV	890	770	845	-
		60, 75, 100, 150, 250, 400, 600 & 750mV	865	750	815	1,430
	Voltmeter	1, 1.5, 2.5, 4, 5, 6, 10, 15, 20, 25, 30V	865	750	880	1,430
		40, 50, 60, 100, 150, 200, 250, 300V	975	865	925	1,440
		400, 500, 600V	1,070	870	1,000	1,505
		Non Standard Voltmeter/Other than above ranges (upto 1000V)	1,350	1,230	1,305	1,790
PO	Micro-Ammeter	15**, 25**, 40**, 50*, 60*, 75uA	1,100	1,020	1,130	-
		100, 150, 200, 250, 400, 500, 600, 750uA	970	880	925	1,440
	Milli -Ammeter	1, 1.5, 2.5, 4, 5, 6, 10, 15, 20, 25, 40, 60, 100, 150, 200, 250, 300, 400, 500, 600, 750 mA	825	750	815	1,360
		1, 1.5, 2.5, 4, 5, 6, 10, 15, 20, 25A	825	750	815	1,360
	Ammeter	30, 40, 60A	990	865	925	1,635
		100A	-	1,000	1,020	1,750
		4-20mA	960	890	950	1,575
		Non Standard Ammeter/Other than above ranges (upto 100A)	-	1,190	1,210	2,090

** Class 5, * Class 2.5



Analog Panel Meters



90° Scale

Group	Type	Description	48x48	72x72	96x96	144x144
			mm	mm	mm	mm
			LP (INR)			
Moving Coil AC Meters with Rectifier			VQ41	VQ71	VQ91	VQ11
	Voltmeter	6**, 10**, 15**, 20**, 25**, 40**, 50*, 60*, 75, 100, 120, 125, 150, 250, 300, 400, 500, 600V	1,365	1,160	1,320	1,850
		Non Standard Voltmeter/Other than above ranges (upto 600V)	1,590	1,345	1,535	2,020
VQ	Micro-Ammeter	100, 150, 250, 400, 500, 600, 750uA	1,265	1,170	1,220	1,770
	Milli -Ammeter	1, 1.5, 2.5, 4, 5, 6, 10, 15, 20, 25, 30, 40, 60, 75, 100mA	1,115	1,030	1,105	1,685
	Ammeter	150, 250, 400, 600, 750mA	1,245	1,160	1,230	1,815
		1, 1.5, 2.5, 4, 5A	-	1,290	1,365	1,945
		6, 10A	-	-	1,450	2,075
Non Standard Ammeter/Other than above ranges (upto 10A)			-	-	1,535	2,140

** Class 5, * Class 2.5

Pointer type Frequency Meters with Built In Transducer			ZQ41	ZQ71	ZQ91	ZQ11
ZQ	Frequency Meter	45-50-55 Hz, 45-55-65 Hz, 55-60-65 Hz	1,160	1,105	1,190	1,280
		380-400-420 Hz, 360-400-440 Hz	-	1,065	1,140	1,230

Vibrating Reed type Frequency Meters			FQ71	FQ91	FQ11
FQ	Frequency Meter	45-50-55 Hz, 47-50-53 Hz	-	1,030	1,070

Power Factor Meters with Built In Transducer			CQ71	CQ91	CQ11
CQ	Power Factor Meter	1Ph. (Not Applicable for CQ71) & 3Ph. balanced load	-	1,825	1,870
		3Ph., 3W unbalanced load (D2C)	-	4,105	4,615
		3Ph., 4W unbalanced load (V3C)	-	5,015	5,610

Cap 0.8-1-0.3 Ind (Bal load), Cap 0.8-1-0.8 Ind (Bal load), Cap 0.5-1-0.5 Ind (Bal & Unbal Load). For 1 Phase meter PF range will be Cap 0.5-1-0.5 Ind only.

For operating frequency 60Hz - Please contact to nearest sales office.

Active (W) / Reactive (B) Power Meters with Built In Transducer			WQ91	WQ11
Active Power Meter (Wattmeter)	WQ	Single Element Single Phase (E1W)	2,000	2,240
		Single Element 3 Phase 3 Wire Balanced Load (D1W)	2,385	2,550
		Two Element 3 Phase 3 Wire Unbalanced Load (D2W)	3,175	3,520
		Single Element 3 Phase 4 Wire Balanced Load (V1W)	2,615	2,785
Re-active Power Meter (VAR Meter)	WQ	Three Element 3 Phase 4 Wire Unbalanced Load (V3W)	3,925	4,365
		Single Element Single Phase (E1B)	2,000	2,240
		Single Element 3 Phase 3 Wire Balanced Load (D1B)	2,385	2,550
		Two Element 3 Phase 3 Wire Unbalanced Load (D2B)	3,175	3,520
		Single Element 3 Phase 4 Wire Balanced Load (V1B)	2,615	2,785
Three Element 3 Phase 4 Wire Unbalanced Load (V3B)			3,925	4,365

Please Specify Measuring Range, Primary & Secondary Voltage & Current While Ordering. Allowable λ factor ranges 0.5 - 1.5

Synchroscope Meters			SQ91	SQ11
SQ	Synchroscope	110/100V, 127/120V, 240/220V, 440/380V, 480/415V (LED TYPE)	2,785	4,215

Maximum Demand Ammeters - BIQ / BIEQ			BI41	BI71	BE71	BI91	BE91
MDI	Ammeter	.../1A/1.2/5/6A (8 minutes / 15 minutes)	1,975	1,760	2,180	1,665	2,035
		.../1A/1.2/5/6A (20 minutes)	-	2,690	3,000	3,000	3,140



Analog Panel Meters



240° Scale

Group	Type	Description	48x48	72x72	96x96	144x144
			mm	mm	mm	mm
			LP (INR)			
Moving Coil DC Meters			PL41	PL71	PL91	PL11
PL	Milli -Voltmeter	50, 60, 75, 100, 150, 250, 400, 600 & 750 mV	-	-	-	-
		1, 1.5, 2.5, 4, 5, 6, 10, 15, 25, 30, 40, 50, 60, 75, 100V	1,540	1,425	1,500	1,765
	Voltmeter	150, 200, 250, 300, 400, 500, 600V	-	-	-	-
		Non Standard Voltmeter/Other than above ranges (upto 600V)	-	1,515	1,615	1,900
	Micro-Ammeter	50*, 60*, 75, 100uA	-	1,500	1,860	1,910
		100, 150, 250, 400, 500, 600uA	-	1,355	1,445	1,830
	Milli -Ammeter	1, 1.5, 2.5, 4, 5, 6, 10, 15, 20, 25, 40, 50, 60, 100, 150, 200, 250, 300, 400, 500, 600, 750 mA	-	-	-	-
		1, 1.5, 2.5, 4, 5, 6, 10, 15, 20, 25A	-	1,295	1,385	1,615
	Ammeter	30, 40, 50, 60A	-	-	1,685	1,765
		4-20mA	1,615	1,470	1,540	1,820
Non Standard Ammeter/Other than above ranges (upto 60A)		-	1,580	1,665	1,930	

* Class 2.5

Moving Coil AC Meters with Rectifier			VL71	VL91	VL11
VL	Voltmeter	6**, 10**, 20**, 25**, 40**, 50*, 60*, 100, 110, 120, 125, 132.5, 133.33, 150, 200, 250, 300, 400, 500, 600V	1,650	1,755	2,005
		Non Standard Voltmeter/Other than above ranges (upto 600V)	1,765	1,850	2,140
	Ammeter	1A & 5A CT operated	1,785	1,870	2,130

** Class 5, * Class 2.5

Frequency Meters with Built In Transducer			ZL91	ZL11
ZL	Frequency Meter	45-50-55 Hz, 45-55-65 Hz, 55-60-65 Hz	2,130	2,335
		380-400-420 Hz, 360-400-440 Hz	2,240	2,445

Power Factor Meters with Built In Transducer			CL91	CL11
CL	Power Factor Meter	1Ph. & 3Ph. balanced load	3,385	4,315
		3Ph., 3W unbalanced load (D2C)	6,145	7,080
		3Ph., 4W unbalanced load (V3C)	6,710	7,630

Cap 0.8-1-0.3 Ind (Balanced load), Cap 0.8-1-0.8 Ind (Balanced load), Cap 0.5-1-0.5 Ind (Balanced & Unbalanced Load).

For 1 Phase meter PF range will be Cap 0.5-1-0.5 Ind and Class 1.5 applicable only.

For operating frequency 60Hz - Please contact to nearest sales office.

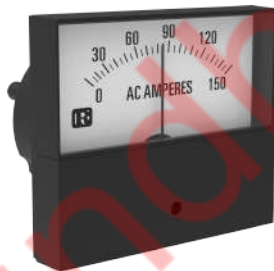
Active (W) / Reactive (B) Power Meters with Built-in Transducer			WL91	WL11
WL	Active Power Meter (Wattmeter)	Single Element Single Phase (E1W)	4,060	4,245
		Single Element 3 Phase 3 Wire Balanced Load (D1W)	3,885	4,060
		Two Element 3 Phase 3 Wire Unbalanced Load (D2W)	5,730	5,915
	Re-active Power Meter (VAR Meter)	Single Element 3 Phase 4 Wire Balanced Load (V1W)	4,060	4,245
		Three Element 3 Phase 4 Wire Unbalanced Load (V3W)	5,245	5,400
		Single Element Single Phase (E1B)	4,060	4,245
Re-active Power Meter (VAR Meter)	Single Element 3 Phase 3 Wire Balanced Load (D1B)	3,885	4,060	
	Two Element 3 Phase 3 Wire Unbalanced Load (D2B)	5,730	5,915	
	Single Element 3 Phase 4 Wire Balanced Load (V1B)	4,060	4,245	
		Three Element 3 Phase 4 Wire Unbalanced Load (V3B)	5,245	5,400

Please Specify Measuring Range, Primary & Secondary Voltage & Current While Ordering. Allowable λ factor ranges 0.5 - 1.5



Analog Panel Meters

Additional Charges Applicable for 90 deg / 240 deg deflection meters	LP (INR)
Standard Scale [e.g. 300/5A (If separate scale is required)]	30
Non-Standard Scale [e.g. RPM, m/min., %, BAR etc. (If separate scale is required)]	55
Customised Scale [Like rpm, m/min., %, BAR etc. This is a surcharge for non standard scale along with the meter price = LP + surcharge]	40
Ammeter (x1) (without suppression)	-
Ammeter (x2) or (x3) suppression (for EQ meters only)	-
Ammeter (x5) or (x6) suppression (for EQ meters only)	30
Ammeter (x2) or (x6) suppression (for VQ & VL meters only)	40
Dual Range with three terminals (for EQ 96 and EQ 144 sizes only)	80
Centre Zero (for PQ, PL, WQ & WL meters only)	30
Zero between left & centre (for PQ, PL, WQ & WL meters only)	35
Zero suppression (1.....5V DC) for PQ or PL meters	40
Additional numbering / marking / red mark	35
Coloured Sectors (red/green) per sector	35
Black scale & yellow / white pointer marking & number	65
Customised frequency EQ (40Hz.....400Hz)	40
Calibration at position other than perpendicular	35
Accuracy Class 1	35
Dual scale with two terminals	40
Triple scale with two terminals	55
Red Pointer Assembly 72x72 or 96x96	65
Spares	LP (INR)
Glass (48,72,96,144mm)	25
Glass with zero adjustment (48,72,96,144mm)	30
Anti glare Glass (48,72,96,144mm)	65
MDI Glass with Zero Adjustment Knob	60
Colour Bezel (White, Blue, Red, Yellow)	45
Clamp-strap with screw (set of 2)	25
Swivel fixing clamp (set of 2)	25
Spring clips (only for 48, set of 2)	45
Bezel / black frame	35
Full Back Cover as per IP-20	45
Rubber Gasket 72 Size	50
Rubber Gasket 96 Size	55
IP 65 protection kit (72 / 96 size)	120
24V DC Illumination kit	200



Analog Panel Meters



ANSI Standard Meters

Challenger Series

		Model	361	362	363	364
		Length x Height (mm)	45.7 x 57.4	76.2 x 58.5	95.3 x 73.9	131.7 x 103
		Round Cutout (mm)	40	54	54	70
Moving Iron AC Meters			EQ1C	EQ2C	EQ3C	EQ4C
EQ	Ammeters	Ammeters - Upto 30A	555	495	555	760
		Ammeters - 40 to 60A	650	600	625	885
	Voltsmeters	Voltsmeters - Upto 300V	590	515	600	840
		Voltsmeters - 400 to 600V	635	600	625	900
Moving Coil DC Meters			PQ1C	PQ2C	PQ3C	PQ4C
PQ	Ammeters	Ammeters - 100 to 500uA	900	900	1,065	1,385
		Ammeter s- 1mA to 30A	770	720	760	1,290
		Ammeter s- 40 to 60A	-	770	830	1,425
	Voltsmeters	Voltsmeter s- Upto 30V	770	720	760	1,290
		Voltsmeter s- 40 to 300V	875	810	870	1,310
		Voltsmeter s- 400 to 600V	970	870	960	1,385
Frequency Meters			ZQ1C	ZQ2C	ZQ3C	ZQ4C
ZQ	Frequency Meter	45-55Hz, 45-65Hz, 55-65Hz - 110V/240V/415V	-	1,050	1,105	-

Anush Series

		Model	11	12
		Length x Height (mm)	55.6 x 47.2	79.2 x 67.5
		Round Cutout (mm)	39	56
Moving Iron AC Meters			EQ1A	EQ2A
EQ	Ammeters	Ammeters - Upto 30A		495
		Ammeters - 40 to 60A		570
	Voltsmeters	Voltsmeters - Upto 300V		555
		Voltsmeters - 400 to 600V		570
Moving Coil DC Meters			PQ1A	PQ2A
PQ	Ammeters	Ammeter - 100 to 500uA	885	915
		Ammeter - 1mA to 30A	705	725
		Ammeter - 40 to 60A	770	790
	Voltsmeters	Voltsmeter - Upto 30V	705	725
		Voltsmeter - 40 to 300V	780	810
		Voltsmeter - 400 to 600V	855	875

Two In One Meters

Model	Type	Description	96x96 mm	144x144 mm
Moving Iron AC meters			EQ9T	EQ1T
EQ 2 in1		AC Moving Iron Low rating (<30A) Ammeter - Voltmeter combination Meters	920	1,450
		AC Moving Iron High rating (30A & above) Ammeter - Voltmeter combination Meters	1,075	1,600
		AC Moving Iron Voltmeter - Voltmeter combination Meters	970	1,525
		AC Moving Iron Low rating (<30A) Ammeter - Low rating Ammeter (<30A) combination Meters	920	1,450
		AC Moving Iron High rating (30A & above) Ammeter - Low rating (<30A) Ammeter combination Meters	1,075	1,600
2 in1		Frequency Meters	ZQ9T	ZQ1T
		ZQ 2 in1 Frequency - Frequency combination meters	1,625	2,150
PQ 2 in1		Moving Coil DC meters	PQ9T	PQ1T
		DC Moving Coil Low rating (<1A) Ammeter - Voltmeter combination Meters	1,450	1,975
		DC Moving Coil High rating (1A & above) Ammeter - Voltmeter combination Meters	1,615	2,115
		DC Moving Coil Voltmeter - Voltmeter combination Meters	1,385	1,920
		DC Moving Coil Low rating (<1A) Ammeter - Low rating (<1A) Ammeter combination Meters	1,450	1,975
		DC Moving Coil High rating (1A & above) Ammeter - Low rating (<1A) Ammeter combination Meters	1,615	2,115

Run - Hour Meters

Model	Type	Description	72x72 mm	96x96 mm
Rish Elapsed Time Meters (Hour meters)			ET71	ET91
ETM	Hour meters	Voltage AC Input : 100-125 / 200-250 / 380-440V 50Hz & 60Hz	2,055	2,320

Phase Sequence Indicators



Model	Type	Description	72x72 mm	96x96 mm
Phase Sequence Indicators			PSI7	PSI9
PSI		Voltage AC Input : 100V to 150V 50Hz / 60Hz	-	2,750
		Voltage AC Input : 151V to 300V 50Hz / 60Hz	2,050	2,250
		Voltage AC Input : 301V to 500V 50Hz / 60Hz	2,050	2,250

CAM Switches

Breaker Control (TNC) Switches

Description	LP (INR)	
	TSR	
	25 A	32 A
TNC 1NO 1NC 60D	880	1,055
TNC 2NO 2NC 60D	1,065	1,270

Spring Return Switches

Description	LP (INR)	
	CSR	
	16 A	25 A
ON OFF SPRING RETURN 90D 1P OFF	540	810
ON OFF SPRING RETURN 90D 2P OFF	560	925
ON OFF SPRING RETURN 90D 3P OFF	635	1,105
ON OFF SPRING RETURN 90D 4P OFF	755	1,195

Description	LP (INR)	
	CSR	
	16 A	25 A
DOUBLE THROW SPRING RETURN 60D 1P 2W OFF	560	925
DOUBLE THROW SPRING RETURN 60D 2P 2W OFF	825	1,195
DOUBLE THROW SPRING RETURN 60D 3P 2W OFF	895	1,495

Description	LP (INR)	
	CSR	
	16 A	25 A
SPRING RETURN 60D 1P 2W W/OFF	515	925
SPRING RETURN 60D 2P 2W W/OFF	755	1,195
SPRING RETURN 60D 3P 2W W/OFF	810	1,495

Spring Return Switches for APFC / Drive Panel Application	LP (INR)	
	CSR2	
	6A	20A
SPRING RETURN ON-OFF 1NO-1NC	220	220
SPRING RETURN ON-OFF 2NO-2NC	310	310
SPRING RETURN ON-OFF 2NO-1NC	270	270

Options:- Additional charges

Front Plate with colour marking (Green & Red) - 30 INR

Legend (Name) Plate - 30 INR

LED CAM Switches :- Prices will be available on request.



Reverse Forward Switches

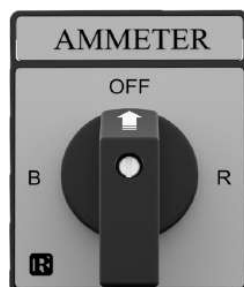
Order code	Description	LP (INR)
CRF1-D45L2XXOFS000	RF 45D 2POLE 25A	585
CRF1-D60L2XXOFS000	RF 60D 2POLE 25A	
CRF1-E45L2XXOFS000	RF 45D 2POLE 32A	685
CRF1-E60L2XXOFS000	RF 60D 2POLE 32A	
CRF1-F45L2XXOFS000	RF 45D 2POLE 40A	1,770
CRF1-F60L2XXOFS000	RF 60D 2POLE 40A	
CRF1-G45L2XXOFS000	RF 45D 2POLE 63A	2,145
CRF1-G60L2XXOFS000	RF 60D 2POLE 63A	
CRF1-D45L3XXOFS000	RF 45D 3POLE 25A	765
CRF1-D60L3XXOFS000	RF 60D 3POLE 25A	
CRF1-E45L3XXOFS000	RF 45D 3POLE 32A	880
CRF1-E60L3XXOFS000	RF 60D 3POLE 32A	
CRF1-F45L3XXOFS000	RF 45D 3POLE 40A	1,990
CRF1-F60L3XXOFS000	RF 60D 3POLE 40A	
CRF1-G45L3XXOFS000	RF 45D 3POLE 63A	2,360
CRF1-G60L3XXOFS000	RF 60D 3POLE 63A	



Instrumentation Switches

Description	LP (INR)				
	CST4				
	6A (PS)	6A (MS)	10A	16A	20A
Ammeter Selector Switch - Line Currents with OFF, 4 Pos.	240	250	295	365	400
Ammeter Selector Switch - Line Currents with Neutral with OFF, 5 Pos.	245	255	300	370	410
Voltmeter Selector Switch - Voltage between phases with OFF, 4 Pos.	175	185	265	320	385
Voltmeter Selector Switch - Voltage between phases and individual phases to neutral with OFF, 7 Pos.	315	325	535	615	650
Voltmeter Selector Switch - Voltage between phases to neutral with OFF, 4 Pos.	310	320	365	450	480

Note : PS - Plastic Shaft Switch with IP20 / MS - Metal Shaft Switch



Changeover Switches

RISHCAM - COFF 60 / COFF 90 / CWOFF 90	Description	LP (INR)										
		CST1				CSS1				CSH1		
		6A (PS)	6A (MS)	10A	16A	20A	25A	32A	40A	63A	100A	200A
With OFF 60 Deg / 90 Deg / 90 Deg without OFF	1P 2W	155	160	285	330	335	355	395	525	695	3,445	4,945
	2P 2W	205	215	335	370	435	470	545	705	1,050	5,010	7,510
	3P 2W	250	260	415	490	605	700	755	890	1,395	6,470	9,590
	4P 2W	300	310	480	570	745	920	975	1,070	1,765	8,235	12,080

RISHCAM - PCF90	Description	LP (INR)										
		CST1				CSS1				CSH1		
		6A (PS)	6A (MS)	10A	16A	20A	25A	32A	40A	63A	100A	200A
Phase Changeover With OFF 90 Deg	1P 3W	185	190	245	285	330	335	435	630	675	2,825	4,015
	2P 3W	230	240	285	365	450	545	620	720	930	4,135	5,770
	3P 3W	275	285	335	385	515	655	680	1,060	1,440	4,400	6,140
DB Phase Changeover With OFF 90 Deg	3P 1W									840		

Isolator Switches

RISHCAM - I60 / 90 / 90 CR	Description	LP (INR)										
		CST3				CSS3				CSH3		
		6A (PS)	6A (MS)	10A	16A	20A	25A	32A	40A	63A	100A	200A
Isolator 60 / 90 / 90 Deg CR	1P ON-OFF	120	125	225	265	275	290	355	435	510	2,590	3,305
	2P ON-OFF	155	160	255	295	315	350	405	515	655	3,180	4,245
	3P ON-OFF	170	180	330	365	410	465	505	610	850	3,895	5,335
	4P ON-OFF	205	215	340	385	460	550	585	705	1,050	4,685	6,465

RISHCAM - I45	Description	LP (INR)										
		CST3				CSS3				CSH3		
		6A (PS)	6A (MS)	10A	16A	20A	25A	32A	40A	63A	100A	200A
Isolator 45 Deg	1P ON-OFF	135	140	190	255	270	280	390	470	565		
	2P ON-OFF	185	190	230	295	335	380	435	580	720		
	3P ON-OFF	215	225	275	325	425	490	580	670	975		

Multistep Switches

RISHCAM - MOFF (3 WAY)	Description	LP (INR)										
		CST2				CSS2				CSH2		
		6A (PS)	6A (MS)	10A	16A	20A	25A	32A	40A	63A	100A	200A
With OFF 90 Deg	1P 3W	185	190	325	340	355	340	425	600	665	3,445	5,195
	2P 3W	255	265	375	415	490	555	595	840	940	4,985	7,825
	3P 3W	350	365	490	695	745	815	895	1,115	1,420	6,500	10,195
	4P 3W	440	455	620	830	910	1,000	1,115	1,460	1,705	8,155	12,840

RISHCAM - MOFF (4 WAY)	Description	LP (INR)										
		CST2				CSS2				CSH2		
		6A (PS)	6A (MS)	10A	16A	20A	25A	32A	40A	63A	100A	200A
With OFF 60 Deg	1P 4W	210	220	290	490	540	590	650	740	970	3,065	4,385
	2P 4W	350	365	530	585	600	620	710	910	1,135	4,385	6,815
	3P 4W	485	500	485	900	955	1,000	1,160	1,535	1,715	11,845	15,285

RISHCAM - MOFF (5 WAY)	Description	LP (INR)										
		CST2				CSS2				CSH2		
		6A (PS)	6A (MS)	10A	16A	20A	25A	32A	40A	63A	100A	200A
With OFF 60 Deg	1P 5W	225	235	450	570	630	730	745	900	1,045	3,110	4,460
	2P 5W	410	425	685	750	850	970	1,135	1,170	1,450	4,450	6,875

Note : PS - Plastic Shaft Switch
MS - Metal Shaft Switch

CAM Switches



Multistep Switches

RISHCAM - MOFF (6 WAY)	Description	LP (INR)										
		CST2				CSS2				CSH2		
		6A (PS)	6A (MS)	10A	16A	20A	25A	32A	40A	63A	100A	200A
With OFF 45 Deg	1P 6W	295	305	300	550	605	655	750	775	1,230	-	-
	2P 6W	485	500	470	795	890	1,000	1,220	1,545	1,970	-	-

RISHCAM - MOFF (7 WAY)	Description	LP (INR)										
		CST2				CSS2				CSH2		
		6A (PS)	6A (MS)	10A	16A	20A	25A	32A	40A	63A	100A	200A
With OFF 45 Deg	1P 7W	305	315	495	590	650	745	770	800	1,220	-	-

RISHCAM - MOFF (8 WAY)	Description	LP (INR)										
		CST2				CSS2				CSH2		
		6A (PS)	6A (MS)	10A	16A	20A	25A	32A	40A	63A	100A	200A
With OFF 30 Deg	1P 8W	335	350	415	585	675	-	-	-	-	-	-

RISHCAM - MOFF (9 WAY)	Description	LP (INR)										
		CST2				CSS2				CSH2		
		6A (PS)	6A (MS)	10A	16A	20A	25A	32A	40A	63A	100A	200A
With OFF 30 Deg	1P 9W	350	365	495	585	725	-	-	-	-	-	-

RISHCAM - MOFF (10 WAY)	Description	LP (INR)										
		CST2				CSS2				CSH2		
		6A (PS)	6A (MS)	10A	16A	20A	25A	32A	40A	63A	100A	200A
With OFF 30 Deg	1P 10W	395	410	510	785	1,050	-	-	-	-	-	-

RISHCAM - MOFF (11 WAY)	Description	LP (INR)										
		CST2				CSS2				CSH2		
		6A (PS)	6A (MS)	10A	16A	20A	25A	32A	40A	63A	100A	200A
With OFF 30 Deg	1P 11W	480	495	565	730	895	-	-	-	-	-	-

RISHCAM - MWOFF (3 WAY)	Description	LP (INR)										
		CST2				CSS2				CSH2		
		6A (PS)	6A (MS)	10A	16A	20A	25A	32A	40A	63A	100A	200A
Without OFF 60 Deg	1P 3W	170	180	305	350	355	435	450	680	765	2,855	4,540
	2P 3W	255	265	450	485	630	785	770	850	1,000	5,005	6,415
	3P 3W	350	365	565	720	760	820	885	1,230	1,445	5,400	10,350
	4P 3W	440	455	620	820	930	1,020	1,080	2,340	2,620	5,785	11,295

RISHCAM - MWOFF (4 WAY)	Description	LP (INR)										
		CST2				CSS2				CSH2		
		6A (PS)	6A (MS)	10A	16A	20A	25A	32A	40A	63A	100A	200A
Without OFF 90 Deg	1P 4W	195	200	330	425	460	525	540	735	1,030	3,445	3,645
	2P 4W	275	285	485	495	570	610	665	895	1,130	5,180	8,550
	3P 4W	375	390	555	775	865	955	1,050	1,140	1,515	6,890	11,295

RISHCAM - MWOFF (5 WAY)	Description	LP (INR)										
		CST2				CSS2				CSH2		
		6A (PS)	6A (MS)	10A	16A	20A	25A	32A	40A	63A	100A	200A
Without OFF 60 Deg	1P 5W	220	230	350	450	515	570	725	910	1,140	3,065	4,405
	2P 5W	410	425	390	610	780	910	985	1,250	1,570	4,435	10,615

Note : PS - Plastic Shaft Switch
MS - Metal Shaft Switch

Multistep Switches

RISHCAM - MWOFF (6 WAY)	Description	LP (INR)										
		CST2				CSS2				CSH2		
		6A (PS)	6A (MS)	10A	16A	20A	25A	32A	40A	63A	100A	200A
Without OFF 60 Deg	1P 6W	245	255	295	570	600	645	745	850	1,075	4,985	9,585
	2P 6W	465	480	565	755	935	1,130	1,150	1,165	1,485	9,810	12,605

RISHCAM - MWOFF (7 WAY)	Description	LP (INR)										
		CST2				CSS2				CSH2		
		6A (PS)	6A (MS)	10A	16A	20A	25A	32A	40A	63A	100A	200A
Without OFF 45 Deg	1P 7W	295	305	375	430	590	760	765	910	1,335	-	-

RISHCAM - MWOFF (8 WAY)	Description	LP (INR)										
		CST2				CSS2				CSH2		
		6A (PS)	6A (MS)	10A	16A	20A	25A	32A	40A	63A	100A	200A
Without OFF 45 Deg	1P 8W	300	310	605	640	675	770	800	900	1,285	-	-

RISHCAM - MWOFF (9 WAY)	Description	LP (INR)										
		CST2				CSS2				CSH2		
		6A (PS)	6A (MS)	10A	16A	20A	25A	32A	40A	63A	100A	200A
Without OFF 30 Deg	1P 9W	350	365	490	995	1,080	-	-	-	-	-	-

RISHCAM - MWOFF (10 WAY)	Description	LP (INR)										
		CST2				CSS2				CSH2		
		6A (PS)	6A (MS)	10A	16A	20A	25A	32A	40A	63A	100A	200A
Without OFF 30 Deg	1P 10W	375	390	650	1,100	1,195	-	-	-	-	-	-

RISHCAM - MWOFF (11 WAY)	Description	LP (INR)										
		CST2				CSS2				CSH2		
		6A (PS)	6A (MS)	10A	16A	20A	25A	32A	40A	63A	100A	200A
Without OFF 30 Deg	1P 11W	645	665	675	1,160	1,260	-	-	-	-	-	-

RISHCAM - MWOFF (12 WAY)	Description	LP (INR)										
		CST2				CSS2				CSH2		
		6A (PS)	6A (MS)	10A	16A	20A	25A	32A	40A	63A	100A	200A
Without OFF 30 Deg	1P 12W	725	750	765	1,220	1,335	-	-	-	-	-	-

Note : PS - Plastic Shaft Switch
MS - Metal Shaft Switch



Metering Current Transformers

3 in 1 CT with RJ12 connection

Secondary Current : 100mA

MODEL	Class 1		
	PRIMARY CURRENT	VA	LP (INR)
XRJ1 (3PH RJ12 75mm wide)	60A	0.25	1,095
	100A		1,150
	125A		1,160
	160A		1,170
XRJ2 (3PH RJ12 105mm wide)	60A	0.25	1,170
	100A		1,205
	125A	0.5	1,210
	160A		1,215
	250A		1,250
XRJ3 (3PH RJ12 140mm wide)	250A	0.25	1,270
	400A		1,295
	630A		1,345
XRJ4 (3PH RJ12 215mm wide)	750A	0.5	1,375
	800A		



Note :- Above CTs will be supplied with detachable cable length of 2 meters, for additional cable length contact local sales office.

3 Phase Nano CT

Secondary Current : 100mA

MODEL	Class 1		
	PRIMARY CURRENT	VA	LP (INR)
X308 - 3PH 65/8	63A	0.1	800
X306 - 3PH 90/15	125A		845
X307 - 3PH 116/26	250A		965



3 Phase Nano CT with RJ12 connection

Secondary Current : 100mA

MODEL	Class 0.5		
	PRIMARY CURRENT	VA	LP (INR)
X308 - 3PH RJ12 65/8	63A	0.1	920
X306 - 3PH RJ12 90/15	125A		960
X307 - 3PH RJ12 116/26	250A		1,095

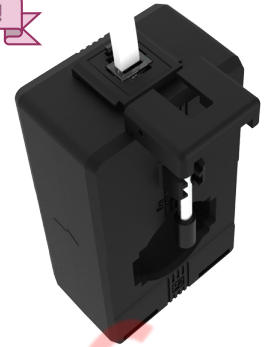
Note :- Above CTs will be supplied with integrated cable length of 1.5 meters

Metering Current Transformers



1 Phase CT with RJ12 connection

Secondary Current : 100mA



MODEL	Class 1			Class 0.5		
	PRIMARY CURRENT	VA	LP (INR)	PRIMARY CURRENT	VA	LP (INR)
XJ52 (1PH RJ12 50/21/30)	50A / 60A	1.0	430			
	75A	1.5	430			
	80A	2.5	430	80A	1.0	605
	100A			100A	1.5	610
	120A	2.5	450	120A	2.5	540
	125A	3.75	455	125A to 150A	2.5	550
	150A	5.0	470	200A	3.75	570
	200A to 250A	5.0	485	250A		585
	300A	7.5	500	300A	5.0	605
	400A		555	400A		655
XJ53 (1PH RJ12 50/30/30)	75A	1.0	430			
	80A	1.5				
	100A / 120A	2.5	440	100A / 120A	1.0	470
	125A	2.5	450	125A		470
	150A	3.75	450	150A	2.5	495
	200A	5.0	470	200A		520
	250A		495	250A		535
	300A	5.0	500	300A to 400A	5.0	550
	400A to 500A	6.25	510	500A		555
	600A	7.5	520	600A		
XJ63 (1PH RJ12 62/30/40)	50A	1.25				
	60A	1.5				
	75A	2.5	655			
	80A	2.0				
	100A / 120A	3.75	665	100A	1.5	745
	125A		675	120A / 125A	2.5	750
	150A	7.5	690	150A	3.75	770
	200A		710	200A	5.0	785
	250A	10.0	750	250A		805
	300A		770	300A	10.0	840
	400A	15.0	825	400A	12.5	900
	500A		835	500A		915
	600A	20.0	865	600A		940
	750A	15.0	895	750A	15.0	960
800A		915	800A		960	
XJ64 (1PH RJ12 62/40/40)	100A to 125A	1.5	485			
	150A	2.5	495			
	200A	3.75	520	200A	1.5	555
	250A		550	250A	2.5	585
	300A	5.0	555	300A		605
	400A		565	400A	5.0	650
	500A	7.5	590	500A		655
	600A		630	600A	7.5	665
	750A	10.0	680	750A	10.0	685
	800A		700	800A		710

Note :- Above CTs will be supplied with detachable cable length of 2 meters, for additional cable length contact local sales office.

Metering Current Transformers

3 Phase CTs

Standard Secondary current: 5A

MODEL	Class 1			Class 0.5			Class 3		
	PRIMARY CURRENT	VA	LP (INR)	PRIMARY CURRENT	VA	LP (INR)	PRIMARY CURRENT	VA	LP (INR)
X301 (3PH-75/15/60)	100A	1.0					100A		1,210
	125A		1,335				125A	2.5	1,255
	150A	1.5		150A	1.5	1,335	150A		1,320
	160A		1,345	160A		1,355	160A		1,335
X302 (3PH-105/21/40)	100A	1.0	935				100A	2.0	925
	125A		955				125A		950
	150A		965				150A		955
	160A	1.5	985	160A		995	160A	2.5	965
	200A		1,030	200A	1.5	1,045	200A		1,020
	250A		1,090	250A		1,100	250A		1,075
X303 (3PH-140/31/40)	250A	1.5	1,075	250A	1.5	1,090	250A	2.5	1,070
	300A		1,110	300A		1,115	300A		1,095
	400A	2.5	1,110	400A	2.5	1,110	400A	3.75	1,100
	500A		1,150	500A		1,160	500A		1,140
X304 (3PH-185/27/45)							40A	1.25	1,000
							60A		1,030
							80A		1,040
	100A	1.5	1,070				100A	1.5	1,055
	150A		1,125				150A		1,110
	200A	2.5	1,205				200A	2.5	1,180
	250A		1,295				250A		1,275
	300A		1,355				300A		1,340
400A	5.0	1,400				400A	5.0	1,385	
500A		1,465				500A		1,405	
X305 (3PH-185/37/45)	300A	2.5	915				300A	2.5	905
	400A		990				400A		965
	500A	5.0	1,125				500A	5.0	1,100
	600A		1,150				600A		1,135
	800A		1,180				800A		1,180

Notes :-

1. Please add INR 290 for 1A secondary current (Before ordering, please check feasibility with local sales office)
2. Please add INR 90 for Busbar Mounting Kit
3. Please add INR 70 for DIN rail Mounting Kit
4. For any non-standard item, please contact local sales office



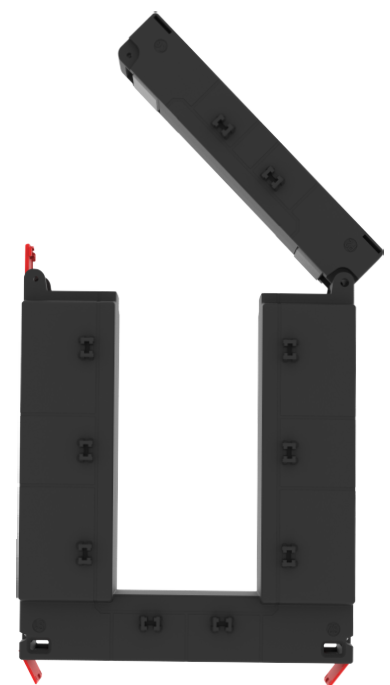
Metering Current Transformers



Split Core CT

Standard Secondary current: 5A

MODEL	CL 1			CL 0.5			CL 3		
	PRIMARY CURRENT	VA	LP (INR)	PRIMARY CURRENT	VA	LP (INR)	PRIMARY CURRENT	VA	LP (INR)
XS01 (93/30SC/40)	100A	1.5					100A	3.5	
	150A	1.75	1,665				150A	3.75	1,665
	200A	2.5					200A	5.0	
	250A	3.75					250A	6.25	
	300A	5.0	2,010	300A	2.5	2,035	300A	6.25	2,010
	400A	6.25		400A	3.75		400A	10.0	
XS05 (105/50SC/50)	100A	1.5	3,640						
	125A		3,675						
	150A	1.75	3,710						
	200A	3.75	3,755	200A	1.5	3,755			
	250A	5.0	3,825	250A	2.5	3,825			
	300A		3,885	300A		3,885			
	400A	7.5	4,000	400A	5.0	4,000			
	500A		4,115	500A		4,115			
	600A	10.0	4,235	600A	6.25	4,235			
	750A	12.5	4,410	750A	7.5	4,410			
XS02 (125/50SC/40)	800A		4,480	800A		4,480			
	250A	2.5		250A	1.0				
	300A			300A					
	400A	3.75	2,290	400A	2.5	2,290			
	500A	5.0		500A	3.75				
	600A	7.5		600A	5.0				
	750A			750A					
	800A	10.0	2,410	800A	7.5	2,410			
	1000A			1000A					
	1200A		2,700	1200A		2,700			
	1250A	15.0		1250A	10.0				
	1500A		3,010	1500A		3,010			
1600A			1600A						
2000A		3,310	2000A		3,310				
XS03 (155/80SC/40)	250A	2.5		250A	1.0				
	300A			300A	1.5				
	400A	3.75		400A	2.5				
	500A	5.0	3,725	500A	3.75	3,725			
	600A	7.5		600A	5.0				
	750A			750A					
	800A	10.0		800A	7.5				
	1000A	15.0		1000A	10.0				
	1200A		3,900	1200A	15.0	3,900			
	1250A	30.0		1250A	15.0				
	1500A			1500A					
	1600A			1600A	20.0				
	2000A	45.0		2000A					
2500A		5,070	2500A	25.0	5,070				
3000A			3000A	30.0					



Notes :

1. Please add INR 120 for 1A secondary current (Before ordering, please check feasibility with local sales office)
2. For any non-standard item, please contact local sales office

Metering Current Transformers

Split Core CT

Standard Secondary current: 5A

MODEL	CL 1			CL 0.5		
	PRIMARY CURRENT	VA	LP (INR)	PRIMARY CURRENT	VA	LP (INR)
XS04 (195/80SC/64)	500A	5.0	5,280	500A	1.25	5,280
	600A			600A		
	750A			750A		
	800A	10.0	5,530	800A	7.5	
	1000A			1000A		
	1200A	20.0	5,700	1200A	15.0	
	1250A			1250A		
	1500A	30.0	6,000	1500A	20.0	
	1600A			1600A		
	2000A			2000A		
	2500A	45.0	6,295	2500A	25.0	
	3000A			3000A		
	4000A	6,605	6,605	4000A	30.0	
	5000A			5000A		



Compact Split Core CT

	CL 1			CL 3		
	CT RATIO	VA	LP (INR)	CT RATIO	VA	LP (INR)
XCS1 (36-18)				60/1A	0.2	1,640
				75/1A		1,650
				80/1A		1,655
				100/1A		1,660
				100/1A		0.2
			125/1A			
XCS2 (50-18)	150/1A	0.2	2,300			
	150/5A					
	200/1A	1.0	2,310			
	200/5A					
	250/1A					
250/5A			200/1A	0.2	2,310	
XCS3 (50-32)	250/1A	0.2	2,320			
	250/5A					
	300/1A					
	300/5A					
	400/1A					
	400/5A					
	500/1A					
500/5A		2,355				



Metering Current Transformers



Resin Cast CT

Standard Secondary current : 5A

MODEL	Class 1			Class 0.5		
	PRIMARY CURRENT	VA	LP (INR)	PRIMARY CURRENT	VA	LP (INR)
XRC1 (80/30/50)	60A	1.5	830			
	100A	5.0	830	100A	2.5	915
	125A		860	125A	2.5	945
	150A / 160A	5.0	875	150A / 160A	3.75	960
XRC2 (90/50/40)	200A	7.5	700	200A	3.75	775
	250A to 320A	10.0	800	250A	3.75	880
			900	300A / 320A	5.0	
XRC3 (110/72/40)	400A	10.0	830	400A	5.0	915
	500A	15.0	865	500A	7.5	950
	600A to 630A		900	600A to 630A	15.0	990
XRC4 (135/85/40)	800A	15.0	945	800A	15.0	1,045
	1000A		1,005	1000A		1,115
	1200A		1,065	1200A		1,170
XRC5 (165/115/40)	1500A	15.0	1,270	1500A	15.0	1,400
	1600A		1,355	1600A		1,490
	2000A		1,505	2000A		1,660
XRC6 (195/130/40)	2500A	15.0	2,000	2500A	15.0	2,200
	3000A		2,145	3000A		2,360
	3200A		2,580	3200A		2,840
XRC7 (230/165/40)	3000A	15.0	2,690	3000A	15.0	2,965
	3200A		2,800	3200A		3,080
XRC8 (295/200/40)	4000A	15.0	3,720	4000A	15.0	4,090
	5000A		4,745	5000A		5,225
XRC9 (83/W/45)	10A to 50A	5.0	925	10A to 50A	5.0	960

Note :

1. Please add INR 120 for 1A secondary current (Before ordering, please check feasibility with local sales office)
2. For any non-standard item, please contact local sales office



Protection Current Transformers



Resin Cast CT - Protection Class

MODEL	5A Secondary				1A Secondary			
	PRIMARY CURRENT	VA	Class	LP (INR)	PRIMARY CURRENT	VA	Class	LP (INR)
XRC1 (80/30/50)	100A to 125A	1.5	5P5	1,320	100A to 125A	1.5	5P5	1,450
	150A / 160A	1.0	5P10	1,420	150A 160A	1.0 1.25	5P10	1,560
XRC2 (90/50/40)	200A	1.25	5P5	1,825	200A	1.5	5P5	2,010
	250A	1.5			250A	2.5		
XRC3 (110/72/40)	300A / 320A	1.5	5P5	1,845	300A / 320A	1.0	5P10	2,025
	400A to 500A	1.0	5P5	1,865	400A 500A	1.0 1.5	5P5	2,045
XRC4 (135/85/40)	600A to 630A	1.5	5P5	1,875	600A to 630A	1.75	5P5	2,055
	800A	2.5	5P5	2,200	800A to 1000A	1.75	5P10	2,430
1000A	3.75	1200A			2.5			
XRC5 (165/115/40)	1200A	5.0	5P5	2,255	1200A	2.5	5P10	2,480
	1250A	2.5			1250A	1.75		
XRC6 (195/130/40)	1500A	3.75	5P5	3,200	1500A to 1600A	2.5	5P10	3,520
	1600A	5.0			2000A	2.5		
XRC7 (230/165/40)	2000A	6.25	5P5	3,235	2000A	2.5	5P10	3,560
	2500A to 3200A	3.75			5P10	4,370		
XRC8 (295/200/40)	3000A to 3200A	3.75	5P10	4,780	3000A to 3200A	5.0	5P10	5,255
	4000A	10.0	5P10	6,360	4000A	15.0	5P10	6,990
5000A		7,230		5000A	20.0	7,950		

Note :

1. For any non-standard item, please contact local sales office



Metering Current Transformers



Wound Primary and Busbar Type : Rish Xmer

Standard Secondary current: 5A

MODEL	Class 1			Class 0.5			MODEL	Class 1			Class 0.5			
	PRIMARY CURRENT	VA	LP (INR)	PRIMARY CURRENT	VA	LP (INR)		PRIMARY CURRENT	VA	LP (INR)	PRIMARY CURRENT	VA	LP (INR)	
XW01 (62/W)	1A to 30A	5.0	540	1A to 30A	2.5	570		75A	1.0					
XW02 (74/W)	1A to 60A	10.0	675	1A to 60A	5.0	705		80A	1.5					
	30A to 40A	1.0	560											
	50A to 60A	1.5	350											
XM01 (45/14/40)	75A to 80A	2.5	355	75A to 80A	1.5	370	XM07 (50/30/30)	100A to 125A	2.5	340	100A to 125A	1.0	355	
	100A to 125A	3.75	370	100A	1.5	375		150A	3.75		150A	2.5		
	150A	5.0		120A to 150A	2.5	385		200A	5	355	200A	2.5	375	
	200A to 250A	7.5	455	200A	3.75	475		250A to 300A		375	250A to 300A	5.0	400	
	300A	10.0	495	250A to 300A	5.0	510		400A to 500A	6.25	390	400A to 600A	5.0	420	
	50A to 60A	1.5		80A	1.0	385		600A	7.5					
	75A to 80A	2.5						50A to 60A	1.5	475				
								75A to 80A	2.5					
XM02 (45/21/40)	100A to 125A	3.75	405	100A to 120A	1.5	405	XM08 (50/30/50)	100A	3.75	500	100A	1.0	555	
				125A	2.5			120A to 150A	5.0		120A / 125A	2.5		
				150A	2.5			150A			150A	5.0	540	
	150A to 250A	5.0	425	200A	3.75	425		200A	7.5	515	200A	5.0	560	
				250A	5.0			250A to 300A	10	525	250A to 300A	5.0	585	
	300A to 400A	5.0	450	300A to 400A	5.0	465		400A to 500A	12.5	565	400A	10.0	635	
	40A	1.0	370					600A	15.0	605	500A to 600A		700	
	50A to 60A		350					50A	1.5	480				
	75A / 80A	1.5	325					60A	2.5	485				
XM03 (50/14/30)	100A to 125A	3.75	365	100A to 125A	2.5	435	XM09 (62/R/40)	75A to 80A	2.5	585	75A	1.5	715	
	150A to 200A	5.0	395	150A to 200A	3.75	465			100A	5.0	650	80A	2.5	720
				250A	5.0	495			120A / 125A		660	100A	2.5	730
	250A to 300A	7.5	430	300A	7.5	510			150A	7.5	680	120A / 125A	3.75	735
	30A to 40A	1.0	650					200A	10.0	700	150A	5.0	765	
	50A to 60A	1.5	640	50A to 60A	1.5	675		250A to 300A	15.0	720	200A	7.5	780	
	75A		675	75A		675		400A		790	250A to 300A	10.0	810	
	80A	5.0	605	80A	2.5	605		500A	15.0	850	400A		880	
XM04 (50/14/50)	100A to 125A	5.0	530	100A to 125A	3.75	595		600A		880	500A	15.0	925	
	150A	7.5		150A	5.0	570		50A	1.5	480	600A		950	
	200A	10.0		200A	7.5	645		60A	2.5	485	75A	1.5	715	
	250A to 300A	12.5	605	300A	10.0	730		75A / 80A	3.75	640	80A	2.5	720	
		50A to 60A	1.0		80A	1.0	460	XM10 (62/20/40)	100A	5.0	650	100A	2.5	730
	75A	1.5	325	100A	1.5	465			120A / 125A	7.5	680	120A / 125A	3.75	735
	80A	2.5		120A to 150A	2.5	420			150A	10.0	700	150A	5	770
	100A to 120A	2.5	340	200A	3.75	435			200A	15.0	730	200A	7.5	780
	125A	3.75	345	250A to 300A	5.0	450			250A to 300A	15.0	790	250A to 300A	10.0	815
XM05 (50/21/30)	150A	5.0	355					400A to 500A	15.0	790	400A to 500A	15.0	880	
	200A to 250A	5.0	365					50A	1.25					
	300A	7.5	380					60A	1.5	500				
	400A	7.5	425					75A	2.5					
	50A	2.5						80A	2.0					
	60A to 75A	3.75	645	60A to 75A	1.5	645	XM11 (62/30/40)	100A to 125A	3.75	510	100A	1.5	565	
	80A	5.0		80A	2.5	650			120A / 125A	5.0	660	120A / 125A	2.5	575
	100A to 125A	5.0	620	100A	2.5	650			150A	7.5	525	150A	3.75	585
	150A	10.0	660	125A to 150A	5.0	670			200A to 250A	10.0	550	200A to 250A	5.0	600
	200A to 300A	12.5	670	200A to 300A	7.5	685			300A	15.0	585	300A	10.0	640
	400A	15.0	685	400A	10.0	695		400A to 500A	15.0	630	400A to 500A	12.5	690	
								600A	20.0	660	600A	15.0	715	
								750A / 800A	15.0	685	750A / 800A	15.0	730	

- Notes :-
- 1) For XW01 and XW02 models, Add INR 50/- for class 0.2 in LP of CL0.5
 - 2) For Class 0.2 prices, Multiply CL0.5 prices by 1.05 (except XW01 and XW02)
 - 3) For Class 0.2S Prices, refer below table (for primary current and VA rating please refer the datasheet)

Model	LP
XM09 62/R/40	1,435
XM10 62/20/40	1,580
XM11 62/30/40	1,565

For Class 0.2 and Class 0.2S, refer the datasheet for Primary Current and VA ratings.

Metering Current Transformers



Busbar Type : Rish Xmer

Standard Secondary current: 5A

MODEL	Class 1			Class 0.5			MODEL	Class 1			Class 0.5			
	PRIMARY CURRENT	VA	LP (INR)	PRIMARY CURRENT	VA	LP (INR)		PRIMARY CURRENT	VA	LP (INR)	PRIMARY CURRENT	VA	LP (INR)	
XM12 (62/30/50)	50A	1.5	730	75A / 80A	2.5	765	XM17 (74/50/45)	100A to 125A	1.5	500	XM18 (86/40/45)	100A to 125A	1.5	500
	60A to 75A	2.5						150A	2.5	515		200A	1.5	600
	80A	3.75						100A	2.5	555		250A	2.5	600
	100A to 125A	5.0	120A to 150A	5	800	300A to 400A		7.5	585	300A to 400A		5.0	630	
	150A	7.5	200A	10.0	865	500A		10.0	605	500A		7.5	635	
	200A	15.0	250A to 300A	15.0	825	600A		12.5	635	600A		10.0	645	
	250A to 300A	15.0	780	250A to 300A	15.0	825		750A to 800A	15.0	655		750A to 800A	12.5	695
	400A	800	400A	15.0	835	1000A		15.0	720	1000A		12.5	765	
	500A	30.0	835	500A	20.0	905		50A to 60A	1.5	830				
	600A	865	600A	20.0	905	75A / 80A		2.5	830					
XM13 (62/40/40)	750A / 800A	30.0	970	750A / 800A	20.0	1,005	100A to 125A	5.0	830	100A to 125A	2.5	835		
	100A to 125A	1.5	370				150A	10.0	690	150A	5.0	740		
	150A	2.5		200A	1.5	425	200A	7.25	770	200A	7.5	770		
	200A	3.75	395	200A	2.5	445	250A	15.0	755	250A	15.0	835		
	250A to 300A	5.0	420	300A	5.0	460	300A	20.0	830	400A	15.0	915		
	400A	5.0	425	400A to 500A	5.0	495	500A to 600A	30.0	875	500A to 600A	30.0	965		
	500A	7.5		600A	7.5	510	750A	30.0	945	750A	30.0	965		
XM14 (74/20/45)	600A to 800A	10.0	425	750A / 800A	10.0	510	800A	30.0	780	800A	30.0	1,035		
	40A	1.5	1,040	50A to 60A	1.0	1,135	1000A	30.0	865	1000A	30.0	925		
	50A	2.5		75A	1.5		960	1200A / 1250A	825	1200A / 1250A	30.0	870		
	60A	3.75		80A	2.5		960	100A	1.0	645				
	75A / 80A	5.0	940	100A	5.0	960	120A	1.5	600					
	100A	7.5	940	100A	5.0	960	125A to 150A	2.5	605					
	120A / 125A	10.0	945	120A / 125A	10.0	990	200A	3.75	640	200A	1.5	705		
	150A	12.5	990	150A	7.5	1,040	250A	5.0	660	250A	2.5	720		
	200A	765	200A	10.0	790	300A	7.5	695	300A	5.0	740			
	250A	15.0	780	250A	10.0	835	400A	12.5	705	400A to 500A	10.0	775		
300A	790	300A	15.0	855	400A to 500A	15.0	890	500A to 600A	15.0	775				
XM15 (74/30/45)	400A	20.0	835	400A to 500A	15.0	890	1000A	30.0	865	1000A	30.0	925		
	500A	15.0					1200A / 1250A	825	1200A / 1250A	30.0	870			
	40A to 50A	1.5	925	75A	1.5	1,065	100A	1.0	645					
	60A to 75A	2.5		80A	1.5	945	120A	1.5	600					
	80A	3.75		100A	2.5	945	125A to 150A	2.5	605					
	100A	5.0	945	100A	2.5	945	200A	3.75	640	200A	1.5	705		
	120A / 125A	5.0	695	120A / 125A	2.5	760	250A	5.0	660	250A	2.5	720		
	150A	7.5	720	150A	5.0	730	300A	7.5	680	300A	5.0	740		
	200A to 300A	15.0	825	200A to 300A	10.0	845	400A	12.5	705	400A to 500A	10.0	775		
	400A to 600A	20.0	865	400A to 600A	15.0	925	500A to 600A	15.0	715	600A	15.0	775		
750A	980	750A	20.0	1,065	750A to 800A	20.0	770	750A	15.0	830				
800A	30.0	1,000	800A	30.0	1,090	800A	20.0	855	800A	20.0	855			
XM16 (74/40/45)	40A	1.0	640				1000A	30.0	845	1000A		895		
	50A to 60A	1.5	650				1200A	30.0	905	1200A		905		
	75A / 80A	2.5	660				1250A		915	1250A	20.0	960		
	100A	3.75	675	100A / 120A	1.5	760	1500A	20.0	955	1500A		1,010		
	120A / 125A	2.5	685	125A	1.5	690	1600A		990	1600A		1,045		
	150A	5.0	695	150A	3.75	700								
	200A to 250A	10.0	695	200A to 250A	5.0	720								
	300A	15.0		300A	10.0									
	400A	15.0	705	400A	10.0	775								
	500A	20.0	735	500A	15.0	810								
600A to 1000A	20.0	765	600A to 1000A	15.0	845									

- Notes :-
- 1) For Class 0.2 and Class 0.2S Primary Current and VA ratings, please refer the datasheet.
 - 2) For Class 0.2 prices, Multiply CL0.5 prices by 1.05
 - 3) For Class 0.2S Prices, refer below table

Model	LP	Model	LP	Model	LP
XM12 62/30/50	1,610	XM15 74/30/45	1,745	XM18 86/40/45	2,015
XM13 62/40/40	1,525	XM16 74/40/45	1,830	XM19 86/50/45	2,105
XM14 74/20/45	1,685	XM17 74/50/45	1,925	XM20 86/60/45	2,105

Metering Current Transformers



Busbar Type : Rish Xmer

Standard Secondary current: 5A

MODEL	Class 1			Class 0.5			MODEL	Class 1			Class 0.5		
	PRIMARY CURRENT	VA	LP (INR)	PRIMARY CURRENT	VA	LP (INR)		PRIMARY CURRENT	VA	LP (INR)	PRIMARY CURRENT	VA	LP (INR)
XR01 (100/100V/45)	400A to 500A	5.0	1,005	400A to 500A	2.5	1,105	XM23 (140/80/45)	200A	5.0	865	200A	2.5	965
	600A		1,040	600A		1,150		250A	10.0	880	250A	5.0	990
	750A		1,090	750A		1,180		300A	15.0	900	300A	7.5	1,000
	800A	1,100	800A	1,205	400A	20.0		960	400A	10.0	1,070		
	1000A	1,155	1000A	1,260	500A to 600A	30.0		1,100	500A to 600A	15.0	1,155		
	1200A / 1250A	1,225	1200A / 1250A	1,325	750A to 800A	45.0		1,185	750A to 800A	15.0	1,315		
	1500A	30.0	1,295	1500A	15.0	1,420		1000A	1,265	1000A	30.0	1,395	
	1600A	1,350	1600A	1,435	1200A	1,285		1200A	1,430				
	2000A	30.0	1,355	2000A	15.0	1,560		1250A	60.0	1,295	1250A	1,440	
	2500A	20.0	1,385	2500A	1,655	1500A to 1600A		1,325	1500A to 1600A	60.0	1,470		
XR02 (100/130V/45)	400A	5.0	1,050	400A	2.5	1,165	XR06 (130/100/50)	2000A	1,350	2000A	1,535		
	500A		1,100	500A		1,225		600A to 800A	10.0	1,975	600A	5.0	2,090
	600A		1,155	600A		1,285		1000A to 1250A	15.0	2,090	1000A to 1250A	15.0	2,415
	750A	1,230	750A	1,355	1500A	15.0		2,090	1500A	15.0	2,630		
	800A	1,265	800A	1,405	1600A	2,280		1600A	2,830				
	1000A	1,360	1000A	1,500	2000A	2,465		2000A	2,830				
	1200A	1,460	1200A	1,600	2500A	15.0		2,660	2500A	15.0	2,935		
	1250A	1,505	1250A	1,650	3000A	2,800		3000A	3,070				
	1500A	30.0	1,620	1500A	15.0	1,775		200A	3.75	835	200A	1.5	940
	1600A	1,690	1600A	1,845	250A	5.0		855	250A	2.5	955		
2000A to 2500A	30.0	1,730	2000A to 2500A	15.0	1,915	300A	7.5	880	300A	3.75	990		
3000A to 3200A	12.5	1,750	3000A to 3200A	10.0	1,965	400A	10.0	910	400A	7.5	1,010		
XM21 (104/60/45)	100A	1.5	850	XM24 (140/100H/45)	500A	12.5	950	500A to 600A	10.0	1,045			
	120A / 125A	2.5	855		600A	15.0	990	750A to 800A	15.0	1,105			
	150A	5.0	865		150A	2.5	980	1000A	20.0	1,075	1000A	15.0	1,170
	200A	10.0	895		200A	5.0	1,000	1200A / 1250A	30.0	1,145	1200A to 1250A	20.0	1,330
	250A	12.5	910		250A	7.5	1,030	1500A	30.0	1,235	1500A	20.0	1,355
	300A to 400A	15.0	930		300A to 400A	10.0	1,040	1600A	45.0	1,330	1600A	20.0	1,355
	500A	20.0	940		500A	15.0	985	2000A	45.0	1,460	2000A	45.0	1,470
	600A	30.0	945		600A	15.0	1,010	2500A	45.0	1,555	2500A	45.0	1,600
	750A	30.0	965		750A	20.0	1,065	3000A	60.0	1,705	3000A	60.0	1,755
	800A	995	800A		30.0	1,035	4000A	60.0	1,780	4000A	60.0	1,860	
XM22 (104/80/45)	1000A	1,110	1000A	1,205	XM25 (140/100V/45)	200A	3.75	835	200A	1.5	940		
	1200A / 1250A	45.0	1,160	1200A / 1250A		30.0	1,260	250A	5.0	855	250A	2.5	955
	1500A	1,230	1500A	1,315		300A	7.5	880	300A	3.75	990		
	1600A	1,260	1600A	1,355		400A	10.0	910	400A	10.0	1,010		
	200A	1.5	650	500A		12.5	950	500A	10.0	1,045			
	250A	2.5	675	250A		1.5	730	600A	15.0	990	600A	12.5	1,045
	300A	7.5	695	300A		2.5	765	750A to 800A	20.0	1,005	750A to 800A	15.0	1,105
	400A	10.0	730	400A		7.5	790	1000A	20.0	1,075	1000A	15.0	1,170
	500A	735	500A	10.0		720	1200A / 1250A	30.0	1,145	1200A to 1250A	1,245		
	600A	12.5	735	600A		10.0	755	1500A	30.0	1,235	1500A	30.0	1,330
750A to 800A	15.0	775	750A to 800A	15.0	845	1600A	45.0	1,330	1600A	45.0	1,440		
1000A	850	1000A	865	2000A	45.0	1,460	2000A	45.0	1,575				
1200A / 1250A	910	1200A / 1250A	960	2500A	1,555	2500A	1,645						
1500A	30.0	950	1500A	20.0	1,000	3000A	60.0	1,705	3000A	60.0	1,800		
1600A	985	1600A	1,065										
2000A	1,100	2000A	1,135										

- Notes :-
- 1) For Class 0.2 and Class 0.2S Primary Current and VA ratings, please refer the datasheet.
 - 2) For Class 0.2 prices, Multiply CL0.5 prices by 1.05
 - 3) For Class 0.2S Prices, refer below table

Model	LP
XR01 100/100V/45	1,795
XR02 100/130V/45	NA
XM21 104/60/45	2,195

Model	LP
XM22 104/80/45	2,290
XM23 140/80/45	2,375

Model	LP
XM24 140/100H/45	2,470
XM25 140/100V/45	2,470

Range	LP
XR06 - 130/100/50	
600 to 1000A	2,860
1200 to 2000A	3,320
2500 to 3000A	3,330

Metering Current Transformers



Busbar Type : Rish Xmer

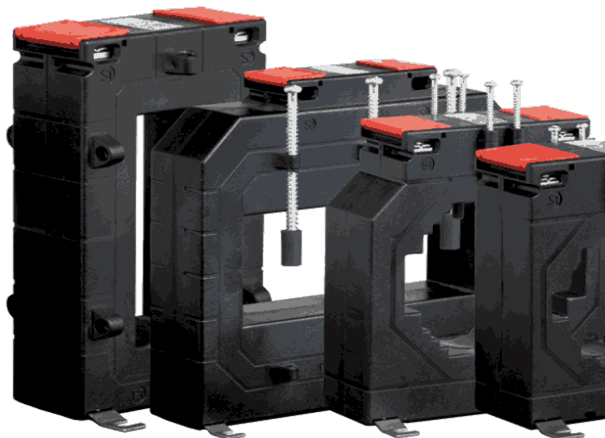
Standard Secondary current: 5A

MODEL	Class 1			Class 0.5			MODEL	Class 1			Class 0.5			
	PRIMARY CURRENT	VA	LP (INR)	PRIMARY CURRENT	VA	LP (INR)		PRIMARY CURRENT	VA	LP (INR)	PRIMARY CURRENT	VA	LP (INR)	
XR03 (140/130V/45)	400A		1,135	400A		1,265	XR04 (225/125/50)	600A to 800A	10.0	1,440	600A	5.0	1,570	
	500A	5.0	1,180	500A	3.75	1,315					750A to 800A	10.0		
	600A		1,245	600A		1,380			1000A		1,565	1000A		1,585
	750A	7.5	1,320	750A	5.0	1,460			1200A	15.0	1,615	1200A	10.0	1,640
	800A		1,360	800A		1,505			1250A		1,655	1250A		1,690
	1000A	10.0	1,460	1000A		1,605			1500A to 1600A	30.0	1,700	1500A to 1600A	15.0	1,750
	1200A	15.0	1,565	1200A	10.0	1,705			2000A	30.0	1,700	2000A	15.0	1,745
	1250A		1,605	1250A		1,770			2500A		1,755	2500A	30.0	1,870
	1500A	15.0	1,730	1500A	15.0	1,890			3000A	60.0	1,970	3000A	30.0	2,005
	1600A		1,800	1600A		1,970			4000A		2,090	4000A	45.0	2,130
	2000A to 2500A		1,890	2000A to 2500A		2,150			5000A	100.0	2,430	5000A	100.0	2,525
	3000A		2,010	3000A		2,260			6000A		2,650	6000A		2,695
	3200A	20.0	2,095	3200A	20.0	2,280			1000A	10.0	1,420	1000A	5.0	1,520
	4000A		2,140	4000A		2,350			1200A to 1250A	15.0	1,630	1200A to 1250A	10.0	1,685
	5000A		2,220	5000A		2,445			1500A	30.0	1,705	1500A	15.0	1,750
							1600A		1,740	1600A		1,775		
							2000A	30.0	1,770	2000A		1,810		
							2500A		1,875	2500A		1,910		
							3000A		1,995	3000A		2,010		
							4000A	45.0	2,090	4000A	30.0	2,105		
							5000A		2,260	5000A		2,305		
							6000A		2,340	6000A		2,430		
							7500A		2,550	7500A		2,610		

- Notes :-
- 1) For Class 0.2 and Class 0.2S Primary Current and VA ratings, please refer the datasheet.
 - 2) For Class 0.2 prices, Multiply CL0.5 prices by 1.05
 - 3) For Class 0.2S Prices, refer below table

Model	LP	Range	LP	Range	LP
Model	LP	XR06 - 225/125/50		XR06 - 225/167/50	
XR03 140/130V/45	NA	1000A	2,420	1500 to 1600A	2,905
		1200 to 1600A	2,815	2000A	3,655
		2000A	3,475	2500 to 3000A	3,785
		2500 to 3000A	3,715	4000A	4,385
		4000A	4,040	5000A	5,045
		5000A	4,530	6000A	5,540
		6000A	5,045	7500A	6,050

- IMP :- For Models XM01 to XM20 - Primary current ranges up to 200A shall come along with wall mounting clamps as default.
Busbar mounting kit is available on chargeable basis (please add INR 30 for the same).
1. Please add INR 120/- for 1A secondary current. (Before ordering, please check the feasibility with local Sales office).
 2. Please add INR 35/- for DIN Rail mounting kit.



Protection Current Transformers



Busbar Type : Rish Xmer

Standard Secondary current: 5A

MODEL	Class 5P5			Class 10P5			Class 5P10			Class 10P10		
	PRIMARY CURRENT	VA	LP (INR)	PRIMARY CURRENT	VA	LP (INR)	PRIMARY CURRENT	VA	LP (INR)	PRIMARY CURRENT	VA	LP (INR)
XP06 (86/50/45)	100A	1.5	800	100A	1.5	725						
	150A	1.75	850	150A	1.75	770						
	200A	2.5	880	200A	2.5	800						
	250A to 300A	3.75	935	250A to 300A	3.75	865						
	400A	5.0	995	400A	5.0	910	300A to 400A	1.0	1,055	300A to 400A	1.0	975
	500A to 600A	5.0	1,055	500A to 600A	5.0	975	500A to 600A	1.0	1,130	500A to 600A	1.0	1,055
	750A to 800A	7.5	1,150	750A to 800A	7.5	1,080	750A to 800A	1.5	1,210	750A to 800A	1.5	1,130
XP07 (104/30/45)	50A to 80A	2.5	1,850	50A to 80A	2.5	1,780	80A	1.5	1,775	60A to 80A	1.5	1,625
	100A to 125A	5.0	1,905	100A to 125A	5.0	1,830	100A to 125A	1.5	1,805	100A to 125A	2.5	1,870
	150A	7.5	1,965	150A	7.5	1,880	150A	2.5	1,865	150A	2.5	1,785
	200A		2,020	200A		1,955	200A	3.75	1,845	200A	3.75	1,845
	250A	10.0	2,095	250A	10.0	2,010	250A		2,000	250A	5.0	1,930
	300A		2,155	300A		2,090	300A	5.0	2,065	300A	5.0	2,000
	400A	15.0	2,300	400A	15.0	2,215	400A	5.0	2,195	400A	5.0	2,080
	500A		2,435	500A		2,350	500A	7.5	2,330	500A	7.5	2,270
	600A	15.0	2,560	600A	15.0	2,480	600A	7.5	2,390	600A	10.0	2,420
	XP08 (104/50/45)	150A	2.5	1,395	150A	2.5	1,385					
200A		5.0	1,405	200A	5.0	1,290	200A	1.5	1,430	200A	1.5	1,350
250A			1,430	250A	7.5	1,485	250A	2.5	1,475	250A	2.5	1,385
300A		7.5	1,620	300A	7.5	1,535	300A	2.5	1,520	300A	2.5	1,435
400A			1,725	400A		1,645	400A		1,620	400A		1,535
500A		10.0	1,820	500A	10.0	1,755	500A	2.5	1,730	500A	2.5	1,645
600A			1,925	600A		1,850	600A		1,820	600A		1,725
750A		10.0	2,080	750A	10.0	2,000	750A	5.0	1,990	750A	5.0	1,905
800A			2,135	800A		2,050	800A		2,035	800A		1,955
1000A		10.0	2,330	1000A	10.0	2,255	1000A	5.0	2,245	1000A	5.0	2,150
XP09 (104/60/45)	100A	1.5	1,140	100A	1.5	1,070						
	150A	2.5	1,180	150A	2.5	1,110	150A to 200A	1.0	1,130	150A to 200A	1.0	1,040
	200A	3.75	1,230	200A	3.75	1,150						
	250A	5.0	1,250	250A	5.0	1,210	250A	1.5	1,175	250A	1.5	1,095
	300A		1,310	300A		1,235	300A	1.75	1,220	300A	1.75	1,135
	400A	7.5	1,400	400A	7.5	1,330	400A	1.75	1,305	400A	1.75	1,220
	500A		1,490	500A		1,420	500A		1,350	500A		1,270
	600A	7.5	1,575	600A	7.5	1,500	600A		1,390	600A		1,310
	750A	10.0	1,530	750A	10.0	1,460	750A	1.75	1,440	750A	1.75	1,355
	800A		1,575	800A		1,500	800A		1,480	800A		1,395
	200A	7.5	2,700	200A	7.5	2,630	200A	2.5	2,610	200A	2.5	2,525
	250A		2,770	250A		2,690	250A		2,670	250A		2,545
	300A	10.0	2,835	300A	10.0	2,760	300A	3.75	2,735	300A	3.75	2,585
XP10 (140/60/45)	400A	10.0	2,970	400A	10.0	2,890	400A	5.0	2,870	400A	5.0	2,765
	500A		3,105	500A		3,020	500A		3,010	500A		2,855
	600A	12.5	3,235	600A	12.5	3,145	600A		3,145	600A		2,920
	750A		3,445	750A		3,335	750A		3,335	750A		3,080
	800A	12.5	3,505	800A	12.5	3,405	800A	5.0	3,405	800A	5.0	3,115
	1000A		3,765	1000A		3,700	1000A		3,675	1000A		3,350
	1200A	12.5	4,045	1200A	12.5	3,960	1200A	7.5	3,950	1200A	7.5	3,630
	1250A		4,105	1250A		4,035	1250A		4,010	1250A		3,755
	1500A	15.0	4,445	1500A	15.0	4,370	1500A	10.0	4,350	1500A	10.0	3,890
	1600A		4,575	1600A		4,490	1600A		4,485	1600A		4,060
2000A	20.0	5,115	2000A	20.0	5,040	2000A	12.5	4,750	2000A	12.5	4,190	

Protection Current Transformers



Busbar Type : Rish Xmer

Standard Secondary current: 5A

MODEL	Class 5P5			Class 10P5			Class 5P10			Class 10P10		
	PRIMARY CURRENT	VA	LP (INR)	PRIMARY CURRENT	VA	LP (INR)	PRIMARY CURRENT	VA	LP (INR)	PRIMARY CURRENT	VA	LP (INR)
XP11 (140/80/45)	200A	5.0	2,325	200A	5.0	2,245	200A	2.5	2,430	200A	2.5	2,350
	250A		2,390	250A		2,300	250A		2,475	250A		2,370
	300A	7.5	2,435	300A	7.5	2,350	300A	3.75	2,535	300A	3.75	2,420
	400A	10.0	2,545	400A	10.0	2,460	400A	5.0	2,655	400A	5.0	2,530
	500A		2,660	500A		2,565	500A		2,760	500A		2,615
	600A	10.0	2,770	600A	10.0	2,680	600A	5.0	2,855	600A	5.0	2,655
	750A to 800A		2,960	750A to 800A		2,880	750A to 800A		3,065	750A to 800A		2,765
	1000A to 1250A	10.0	3,075	1000A to 1250A	10.0	3,005	1000A to 1250A	5.0	2,910	1000A to 1250A	5.0	2,780
	1500A to 1600A	15.0	3,185	1500A to 1600A	15.0	3,085	1500A to 1600A	7.5	3,240	1500A to 1600A	7.5	2,805
	2000A	20.0	3,350	2000A	20.0	3,255	2000A	10.0	3,660	2000A	10.0	3,080
2500A	3,555		2500A	3,375		2500A	4,130		2500A	3,555		
250A to 300A	2.5	1,375	250A to 300A	2.5	1,290							
400A	3.75	1,475	400A	3.75	1,390							
500A to 600A	5.0	1,585	500A to 600A	5.0	1,510	600A	1.0	1,525	600A	1.0	1,445	
750A to 800A	7.5	1,770	750A to 800A	7.5	1,680	750A to 800A	1.0	1,670	750A to 800A	1.0	1,590	
1000A	10.0	1,865	1000A	10.0	1,785	1000A	1.0	1,845	1000A	1.0	1,770	
1200A / 1250A		1,910	1200A / 1250A		1,830	1200A / 1250A		1,810	1200A / 1250A		1,725	
1500A	10.0	2,095	1500A	10.0	2,015	1500A	1.25	2,000	1500A	1.25	1,920	
1600A		2,170	1600A		2,095	1600A		2,070	1600A		1,995	
2000A	10.0	2,450	2000A	10.0	2,385	2000A	1.25	2,350	2000A	1.25	2,280	
2500A		2,810	2500A		2,720	2500A		2,710	2500A		2,630	
100A	10.0	3,295	100A	10.0	3,400	150A	5.0	3,590				
150A to 200A		3,405	150A to 200A		15.0	3,240	200A	7.5	3,660	200A	10.0	3,580
250A	15.0	3,555	250A	15.0	3,385	250A	10.0	3,690	250A	15.0	3,660	
300A		3,715	300A		3,510	300A		3,730	300A		3,785	
400A to 500A	15.0	3,675	400A to 500A	15.0	3,510	400A to 500A	15.0	3,800	400A to 500A	15.0	3,635	
600A to 800A		3,830	600A to 800A		15.0	3,675		600A to 800A	15.0		4,160	600A to 800A
1000A to 1250A	15.0	4,200	1000A to 1250A	15.0	4,035	1000A to 1250A	15.0	4,590	1000A to 1250A	15.0	4,395	
1500A to 2000A	15.0	4,480	1500A to 2000A	15.0	4,325	1500A to 2000A	15.0	4,920	1500A to 2000A	15.0	4,710	
600A to 800A	5.0	2,260	600A	5.0	2,245							
1000A	10.0		750A to 1000A	10.0	2,370							
1200A to 1250A	10.0	2,665	1200A to 1250A	15.0	2,910	1200A to 1250A	1.5	2,885	1200A to 1250A	2.5	2,820	
1500A to 1600A	15.0	2,900	1500A to 1600A	15.0	2,715	1500A to 1600A	2.5	2,850	1500A to 1600A	2.5	2,840	
2000A to 2500A	15.0	3,210	2000A to 2500A	15.0	3,010	2000A	3.75	3,450	2000A	5.0	3,490	
3000A to 4000A	15.0	3,635	3000A to 5000A	20.0	3,590	3000A to 5000A	5.0	3,905	3000A to 4000A	7.5	4,065	
5000A	20.0	3,835							5000A	10.0		
1000A to 1250A	5.0	2,710	1000A	5.0	2,645	1200A to 1250A	1.5	2,955	1200A to 1250A	2.5	2,890	
1500A to 1600A	5.0	2,865	1500A to 1600A	7.5	2,910	1500A to 1600A	2.5	3,045	1500A to 1600A	3.75	3,000	
2000A	7.5	3,180	2000A	12.5	3,240	2000A to 2500A	3.75	3,380	2000A	5.0	3,370	
2500A	10.0		2500A	15.0		2500A	7.5					
3000A	15.0	3,550	3000A to 4000A	20.0	3,510	3000A to 4000A	7.5	4,005	3000A	10.0	3,975	
4000A	20.0	3,760							4000A	12.5	4,150	
5000A to 6000A	20.0	4,000	5000A to 6000A	20.0	3,740	5000A to 6000A	7.5	4,150	5000A to 6000A	12.5	4,250	

Notes :-

1. Please add INR 120/- for 1A secondary current. (Before ordering, please check the feasibility with local Sales office).
2. Please add INR 35/- for DIN Rail mounting kit.
3. For any non-standard CT item please contact local sales office.

Metering Current Transformers



TW series CT

Standard Secondary current : 5 A

MODEL	Class 1			Class 0.5			Class 0.5S			Class 0.2		
	PRIMARY CURRENT	VA	LP (INR)	PRIMARY CURRENT	VA	LP (INR)	PRIMARY CURRENT	VA	LP (INR)	PRIMARY CURRENT	VA	LP (INR)
TW01 (73/30/40)	50A to 80A	1.5	435									
	100A	2.5	435									
	120A	2.5	470	100A to 120A	1.5	485						
	125A	3.75	485	125A	2.5	510						
	150A	5.0	510	150A	5.0	520						
	200A	10.0	510	200A	5.0	540						
TW02 (73/30/50)	50A	1.5	525									
	60A	1.5	540									
	75A / 80A	2.5	540	75A / 80A	1.5	565						
	100A to 125A	5.0	560	100A to 125A	2.5	585						
	150A	10.0	585	150A	5.0	585	150A	2.5	600			
	200A	15.0	600	200A	10.0	600	200A	5.0	620	200A	2.5	650
TW03 (92/43/41)	75A	1.0	600									
	80A	1.5	605									
	100A	2.5	620									
	120A / 125A	2.5	610	100A to 125A	1.0	610						
	150A	3.75	630	150A	1.5	630						
	200A	10.0	630	200A	5.0	635	200A	5.0	705	200A	1.5	745
TW04 (100/58/41)	250A	15.0	640	250A	7.5	640	250A	7.5	725	250A	2.5	765
	300A	20.0	645	300A	10.0	645	300A	10.0	725	300A	3.75	780
	120A	1.0	560									
	125A	1.5	560									
	150A	2.5	560	150A	1.0	565						
	200A	5.0	565	200A	2.5	595	200A	1.5	595			
TW05 (110/72/41)	250A	7.5	595	250A	3.75	595	250A	2.5	620			
	300A	10.0	595	300A	5.0	605	300A	3.75	640			
	400A	20.0	595	400A	10.0	560	400A	7.5	620	400A	5.0	690
	500A	25.0	610	500A	15.0	595	500A	10.0	635	500A	7.5	715
	600A	25.0	610	600A	15.0	610	600A	15.0	645	600A	10.0	735
	200A	1.5	595									
TW06 (159/113/40)	250A	2.5	630	250A	1.5	630						
	300A	5.0	650	300A	2.5	650						
	400A	12.5	680	400A	7.5	680	400A	5.0	700	400A	2.5	725
	500A	15.0	715	500A	10.0	715	500A	7.5	725	500A	3.75	755
	600A	15.0	730	600A	10.0	730	600A	7.5	745	600A	5.0	775
	800A	30.0	745	800A	15.0	745	800A	15.0	770	800A	10.0	790
1000A	30.0	780	1000A	15.0	780	1000A	15.0	790	1000A	10.0	805	
TW06 (159/113/40)	600A	10.0	855	600A	5.0	855	600A	3.75	875	600A	1.5	890
	800A	15.0	875	800A	10.0	875	800A	7.5	890	800A	2.5	900
	1000A	15.0	890	1000A	10.0	890	1000A	7.5	900	1000A	3.75	925
	1200A	30.0	940	1200A	20.0	940	1200A	15.0	950	1200A	10.0	965
	1250A	30.0	985	1250A	20.0	985	1250A	15.0	990	1250A	10.0	995
	1500A	30.0	1,020	1500A	20.0	1,020	1500A	15.0	1,025	1500A	10.0	1,030
	1600A	45.0	1,055	1600A	25.0	1,055	1600A	20.0	1,065	1600A	15.0	1,070
	2000A	45.0	1,080	2000A	25.0	1,080	2000A	20.0	1,095	2000A	15.0	1,120
	2500A	45.0	1,160	2500A	25.0	1,165	2500A	20.0	1,170	2500A	15.0	1,175
	3000A	45.0	1,235	3000A	30.0	1,250	3000A	25.0	1,260	3000A	15.0	1,270
	3200A	45.0	1,290	3200A	30.0	1,310	3200A	25.0	1,315	3200A	15.0	1,355

Sr. No.	Accessories (Optional) - Wall Mounting Bracket	OD/ID (AXIAL)	LP (INR)
1	TW-2	73/30 (50)	45
2	TW-3	92/43 (41)	50
3	TW-4	100/58 (41)	60
4	TW-5	110/72 (41)	60
5	TW-6	159/113 (40)	65

Note :-

- Please add INR 120 for 1A secondary current (Before ordering, please check feasibility with local sales office)
- For any non-standard item, please contact local sales office



Metering Current Transformers



TW e series CT

Standard Secondary current : 5 A

MODEL	Class 1			Class 0.5		
	PRIMARY CURRENT	VA	LP (INR)	PRIMARY CURRENT	VA	LP (INR)
TE01 - TW-E 73/30/50	100A	5.0		100A	2.5	650
	150A	5.0	475	150A	5.0	
	200A	5.0		200A	5.0	480
TE02 - TW-E 80/30/100 (w/o casing)	100A	10.0	700	100A	2.5	865
		15.0	1,695			
	150A	15.0	1,435	150A	5.0	1,610
TE03 - TW-E 92/43/41	200A	5.0	505	200A	5.0	505
		10.0	845			
	250A	5.0	475	250A	5.0	505
TE04 - TW-E 95/50/40		10.0	540		7.5	715
		15.0	845			
	300A	5.0	480	300A	5.0	525
TE05 - TW-E 100/58/41		10.0	585		10.0	740
		15.0	740			
	400A	5.0	495	400A	5.0	510
TE06 - TW-E 110/72/41		15.0	660		5.0	605
		5.0	465			
	200A	10.0	510	200A	5.0	605
TE07 - TW-E 135/85/30		15.0	865			
		5.0	485		5.0	560
	250A	10.0	630	250A	7.5	790
TE08 - TW-E 159/113/40		15.0	900			
		5.0	540		5.0	570
	300A	10.0	660	300A	10.0	835
TE09 - TW-E 165/130/30		15.0	815			
		5.0	480		5.0	510
	400A	10.0	540	400A	10.0	720
TE10 - TW-E 190/150/40 (w/o casing)		15.0	540		5.0	510
		5.0	480		5.0	510
	500A	10.0	510	500A	10.0	540
TE11 - TW-E 235/200/35 (w/o casing)		15.0	540		15.0	720
		5.0	480		5.0	510
	600A	10.0	540	600A	10.0	540
TE12 - TW-E 235/200/35 (w/o casing)		15.0	515		5.0	515
		5.0	495		5.0	515
	800A	10.0	510	800A	10.0	535
TE13 - TW-E 235/200/35 (w/o casing)		15.0	515		15.0	685
		5.0	495		5.0	535
	1000A	10.0	585	1000A	15.0	745
TE14 - TW-E 235/200/35 (w/o casing)		15.0	585		5.0	510
		5.0	495		5.0	510
	800A	10.0	535	800A	10.0	550
TE15 - TW-E 235/200/35 (w/o casing)		15.0	660		15.0	835
		5.0	480		5.0	510
	1000A	10.0	660	1000A	15.0	835
TE16 - TW-E 235/200/35 (w/o casing)		15.0	720			
		5.0	480		5.0	515
	1200A	10.0	660	1200A	15.0	835
TE17 - TW-E 235/200/35 (w/o casing)		15.0	835		15.0	1,000
		5.0	495		5.0	535
	1500A	10.0	835	1500A	15.0	1,000
TE18 - TW-E 235/200/35 (w/o casing)		15.0	865		15.0	1,040
		5.0	495		5.0	510
	1600A	10.0	865	1600A	15.0	1,040
TE19 - TW-E 235/200/35 (w/o casing)		15.0	955		15.0	1,125
		5.0	495		5.0	510
	2000A	10.0	955	2000A	15.0	1,125
TE20 - TW-E 235/200/35 (w/o casing)		15.0	1,070		15.0	1,245
		5.0	480		5.0	510
	2400A	10.0	1,070	2400A	15.0	1,245
TE21 - TW-E 235/200/35 (w/o casing)		15.0	1,165		15.0	1,345
		5.0	480		5.0	510
	2500A	10.0	1,165	2500A	15.0	1,345
TE22 - TW-E 235/200/35 (w/o casing)		15.0	1,445		15.0	1,610
		5.0	480		5.0	510
	3200A	10.0	1,445	3200A	15.0	1,610
TE23 - TW-E 235/200/35 (w/o casing)		15.0	1,965			
		5.0	480			
	4000A	10.0	1,965			
TE24 - TW-E 235/200/35 (w/o casing)		15.0	2,615			
		5.0	480			
	5000A	10.0	2,615			

Accessories (Optional) - Wall Mounting Bracket

Sr. No.	OD/ID (AXIAL)	LP (INR)
1	73/30 (50)	45
2	92/43 (41)	50
3	100/58 (41)	60
4	110/72 (41)	60
5	159/113 (40)	65

Notes :

1. Please add INR 120 for 1A secondary current (Before ordering, please check feasibility with local sales office)
2. Please add INR 35 for Busbar Mounting Kit
3. For any non-standard item, please contact local sales office

Rishabh Instruments Ltd.

\$ For productwise approbations, please contact local sales office

Protection Current Transformers



TW-E series (without encapsulation)

Standard Secondary current: 5A

MODEL XP01	CL 5P10		
	PRIMARY CURRENT	VA	LP (INR)
140/30(140)	100A	15	7,470
140/30(100)	150A	15	4,575
140/50(100)	200A	15	3,865
140/50(90)	250A	15	3,865
140/60(80)	400A	15	2,245
140/60(60)	600A	15	2,110
140/80(80)	800A	15	2,140
160/105(70)	1000A	15	2,210
160/105(70)	1200A	15	2,245
160/105(70)	1250A	15	2,245
180/115(50)	1600A	15	2,310
185/130(50)	2000A	15	2,350

Note :-

1. Please add INR 120 for 1A secondary current (Before ordering, please check feasibility with local sales office)
2. For any non-standard item, please contact local sales office



Metering Current Transformers



Summation CT

Standard Secondary current: 5A

MODEL	Class 1			Class 0.5		
	PRIMARY CURRENT	VA	LP (INR)	PRIMARY CURRENT	VA	LP (INR)
XU01 (Rish Xmer Sigma 72)	5+5	5.0	1,400	5+5	5.0	1,565
		10.0	1,425		10.0	1,575
		15.0	1,450		15.0	1,605
		20.0	1,575			
		25.0	1,605			
	5+5+5	5.0	1,425	5+5+5	5.0	1,655
		10.0	1,445		10.0	1,670
		15.0	1,475		15.0	1,700
		20.0	1,670			
		25.0	1,700			
	5+5+5+5	5.0	1,435	5+5+5+5	5.0	1,710
		10.0	1,450		10.0	1,745
		15.0	1,475		15.0	1,755
		20.0	1,740			
		25.0	1,755			
XU01 (Rish Xmer Sigma 150)	5+5+5+5+5	5.0	1,555	5+5+5+5+5	5.0	1,800
		10.0	1,575		10.0	1,820
		15.0	1,600		15.0	1,870
		20.0	1,820			
		25.0	1,870			
	5+5+5+5+5+5	5.0	1,585	5+5+5+5+5+5	5.0	1,875
		10.0	1,605		10.0	1,905
		15.0	1,620		15.0	1,925
		20.0	1,905			
		25.0	1,925			
5+5+5+5+5+5+5	5.0	1,640	5+5+5+5+5+5+5	5.0	1,905	
	10.0	1,665		10.0	1,925	
	15.0	1,685		15.0	1,955	
	20.0	1,925				
	25.0	1,955				
5+5+5+5+5+5+5+5	5.0	1,730	5+5+5+5+5+5+5+5	5.0	1,975	
	10.0	1,770		10.0	2,015	
	15.0	1,790		15.0	2,065	
	20.0	2,005				
	25.0	2,065				



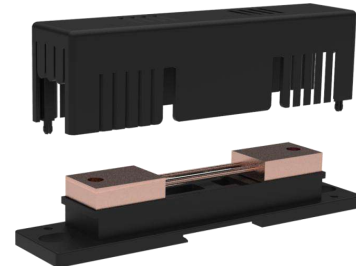
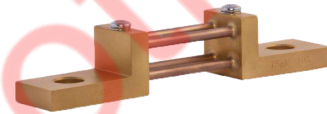
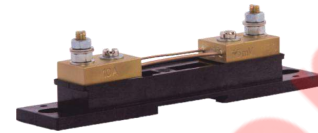
Rishabh Instruments Ltd.

\$ For productwise approbations, please contact local sales office

DC Shunts

Shunts - Accuracy Class 0.5

Current Rating (A)	LP (INR)		
	YN01		
	50/60/ 75mV	100mV	150mV
1	285	425	485
5	285	465	490
10	285	465	490
15	285	515	545
20	285	515	550
25	335	510	545
30	330	535	580
40	330	535	595
50	335	535	675
60	330	575	840
75	330	605	970
100	420	720	1,135
125	520	925	1,195
150	520	925	1,390
175	910	1,150	1,635
200	925	1,240	1,760
250	1,020	1,390	2,035
300	1,320	1,605	2,370
400	1,455	1,975	2,725
500	1,515	2,130	3,035
600	1,605	2,380	3,445
750	1,790	2,495	4,115
800	2,545	3,715	5,625
1000	3,900	4,560	7,860
1200	4,230	4,950	10,225
1250	5,350	6,230	11,000
1500	6,155	6,850	12,120
2000	6,470	8,430	17,950
2500	6,995	9,975	19,090
3000	7,655	12,900	21,600
4000	10,890	19,435	27,820
5000	17,290	23,730	34,325
6000	27,780	30,290	44,430
7500	33,655	41,420	56,080
10000	65,800	83,605	87,620
12000	80,730	1,00,000	1,11,150
15000	1,12,340	1,23,165	1,34,915



Note :

1. For 0.2 Accuracy Class Shunt (upto 2500A), multiply the standard price by 1.3
2. For any non-standard item, please contact local sales office
3. "Insulating Base" will be supplied with shunts 1 to 30A shunt ratings only

Rishabh Instruments Ltd.

\$ For productwise approbations, please contact local sales office

Terms and conditions

- This issue of Price List supersedes all previous Price Lists
- All Prices are in INR
- The prices are subject to change without prior notice
- List Prices mentioned are exclusive of all taxes & duties
- Prices charged will be as prevailing on the date of dispatch
- Minimum order value criterion should be observed while ordering
- The company reserves the right to supply goods at its discretion
- For any non-standard requirement, please contact nearest sales office regarding technical feasibility, price & delivery

Warranty

- All the products listed in the Price List carry a warranty of 18 months against manufacturing defects (unless otherwise specified) from the date of purchase or 12 months from the date of commissioning, whichever is earlier

Note

- To facilitate the ordering kindly make use of product configurator
- Kindly refer respective datasheets for detailed technical specifications. Technical specs given in this price list are in abbreviated form only for easy understanding. Selection of products must be done from the datasheets.
- Since the product approvals mentioned in the price list are on generic header level, kindly contact to our nearest sales office for product-wise approvals
- For any enquiry regarding Energy Measurement Software and Solar Inverters, kindly contact our sales office.



RISHABH

Rev : LP / 2023 / AE / 02

Product upgradation is a continuous process. Hence data in this price list is subject to change without prior notice. For the latest information, please get in touch with our sales offices.



Measure



Control



Record



Analyze

RISHABH INSTRUMENTS LIMITED

Domestic (India): +91 253 2202028/99 | marketing@rishabh.co.in

www.rishabh.co.in